

PRODUCT INFORMATION PACKET

Model No: 5KH37PN39
Catalog No: H112
1/6 HP General Purpose Motor, 1 phase, 1200 RPM, 115 V, 48 Frame, ODP
Single Phase ODP Motors



Regal and Marathon are trademarks of Regal Beloit Corporation or one of its affiliated companies.
©2020 Regal Beloit Corporation, All Rights Reserved. MC017097E

REGAL



Nameplate Specifications

Output HP	0.17 Hp	Output KW	0.13 kW
Frequency	60 Hz	Voltage	115 V
Current	4 A	Speed	1140 rpm
Service Factor	1.35	Phase	1
Efficiency	50.5 %	Power Factor	0
Duty	Continuous	Insulation Class	B
KVA Code	P	Frame	48
Enclosure	Drip Proof	Thermal Protection	N/R
Ambient Temperature	40 °C	Drive End Bearing Size	6203
Opp Drive End Bearing Size	6203	UL	Recognized
CSA	Yes	CE	N

Technical Specifications

Electrical Type	Split Phase	Starting Method	SM
Poles	6	Rotation	Counterclockwise/Clockwise
Mounting	Resilient Base	Motor Orientation	ANY
Drive End Bearing	BALL	Opp Drive End Bearing	Ball
Frame Material	Rolled Steel	Overall Length	10.4 in
Frame Length	6.62 in	Shaft Diameter	0.500 in
Shaft Extension	1.5 in		
Connection Drawing	52A105377AA	Outline Drawing	52A101440P5

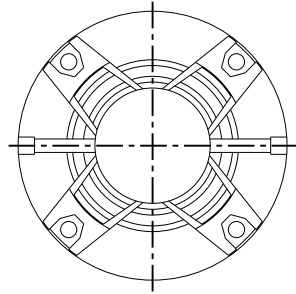
This is an uncontrolled document once printed or downloaded and is subject to change without notice. Date Created:03/11/2020

THIRD ANGLE PROJECTION

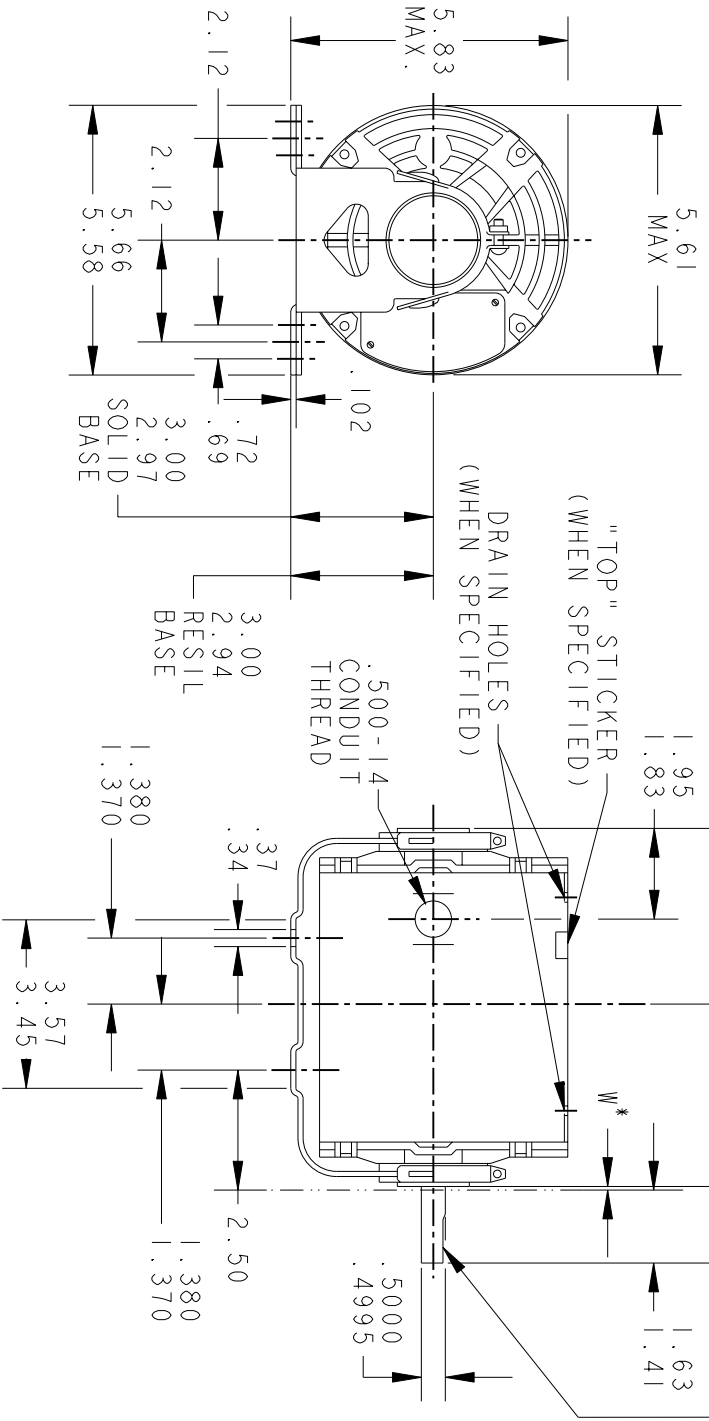


REVISIONS

REV.	DESCRIPTION	DATE	APPROVED
7	REDRAWN NO CHANGE T196-22390	07/10/96	MDP
8	CHG TO RBC FORMAT PER IS 05-1777	15/12/05	GOVARDAN



VIEW SHOWING PE VENTILATION OPENINGS



* W IS A CLEARANCE DUE TO VARIATION IN PARTS & ASSEMBLY.

PT	TYPE	GE SIZE	NEMA FR	C	L	PT	TYPE	GE SIZE	NEMA FR	C	L
3	KH	33	48	9.19	3.84	6	KH	38	48	11.00	5.65
2	KH	32	48	8.94	3.59	5	KH	37	48	10.40	5.05
1	KH	35	48	9.57	4.22	4	KH	36	48	10.00	4.65

SIGNATURES

MODEL	DATE
GLB	11/14/74

REGAL-BELOTT CORPORATION

REGAL-BELOTT

OUTLINE

TITLE
FORM G - GENERAL PURPOSE MOTOR - DRIP PROOF - SOLID OR RESL BASE - BALL OR SLEEVE BEARING

SIZE: DRAWING A

SCALE: 1.000 REF. No.:

52A101440

REV 8

FOR ADDITIONAL INFO REFER TO:
 APPLIED PRACTICES
 DIMENSIONS ARE IN INCHES
 MATERIAL

ISSUED MDP 07/10/96

QUALITY

MFG

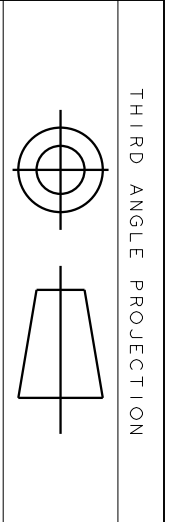
ENGRG

CHECKED

DETAIL

MODEL GLB 11/14/74

SOLID MODEL: 52A101440



THIRD ANGLE PROJECTION

REVISIONS

REV.	DESCRIPTION	DATE	APPROVED
1	UPDATED FORMAT	11/10/05	MAM

EITHER ROTATION - SINGLE VOLTAGE
TYPE KC, OR KH



NOTE #1 - TO REVERSE ROTATION INTERCHANGE BLACK (T5-KH OR J9-KC) AND RED (T8) LEADS.

NOTE #2 - WHEN MORE THAN ONE CAPACITOR IS USED CONNECT IN PARALLEL.

REF. DIAG. - 121A850		SWITCH (C) - 115D958AB	
SIGNATURES		CONNECTION LABEL - 52X332047	
MODEL	M.D. PAPER	REGAL-BELOIT CORPORATION	
DETAIL	DATE	REGAL-BELOIT CORPORATION	
CHECKED	DATE	CONNECTION DIAGRAM	
ENGRG	DATE	FME: 30 FRAME SWITCH REDESIGN	
MFG	DATE	52A105377AA	
QUALITY	DATE	REV 1	
ISSUED	DATE	SHEET 1 of 1	
MATERIAL	DATE	SCALE: 1.000 REF. No: .	



REGAL-BELOIT CORPORATION

FME: 30 FRAME SWITCH REDESIGN

52A105377AA

REV 1

SHEET 1 of 1